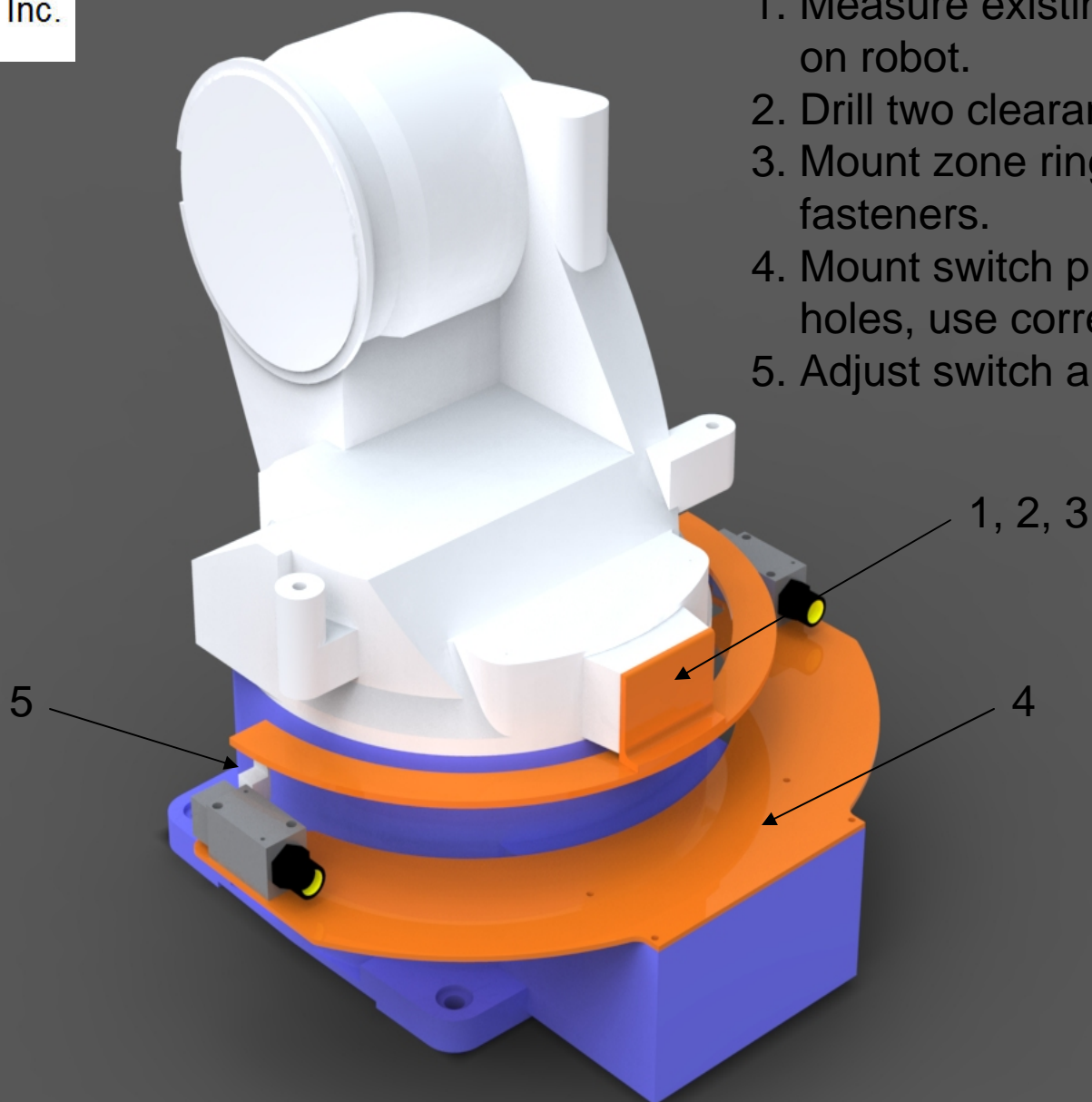
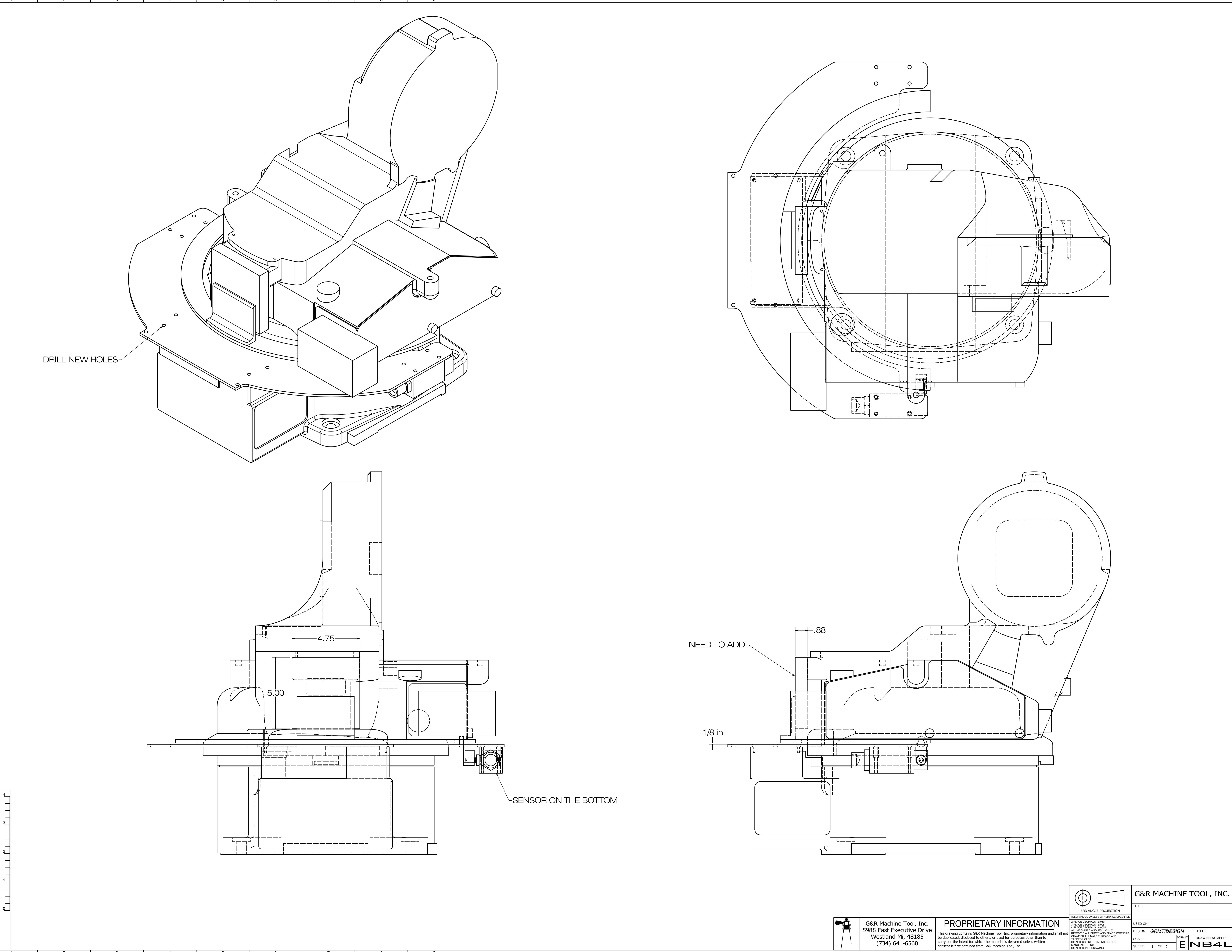
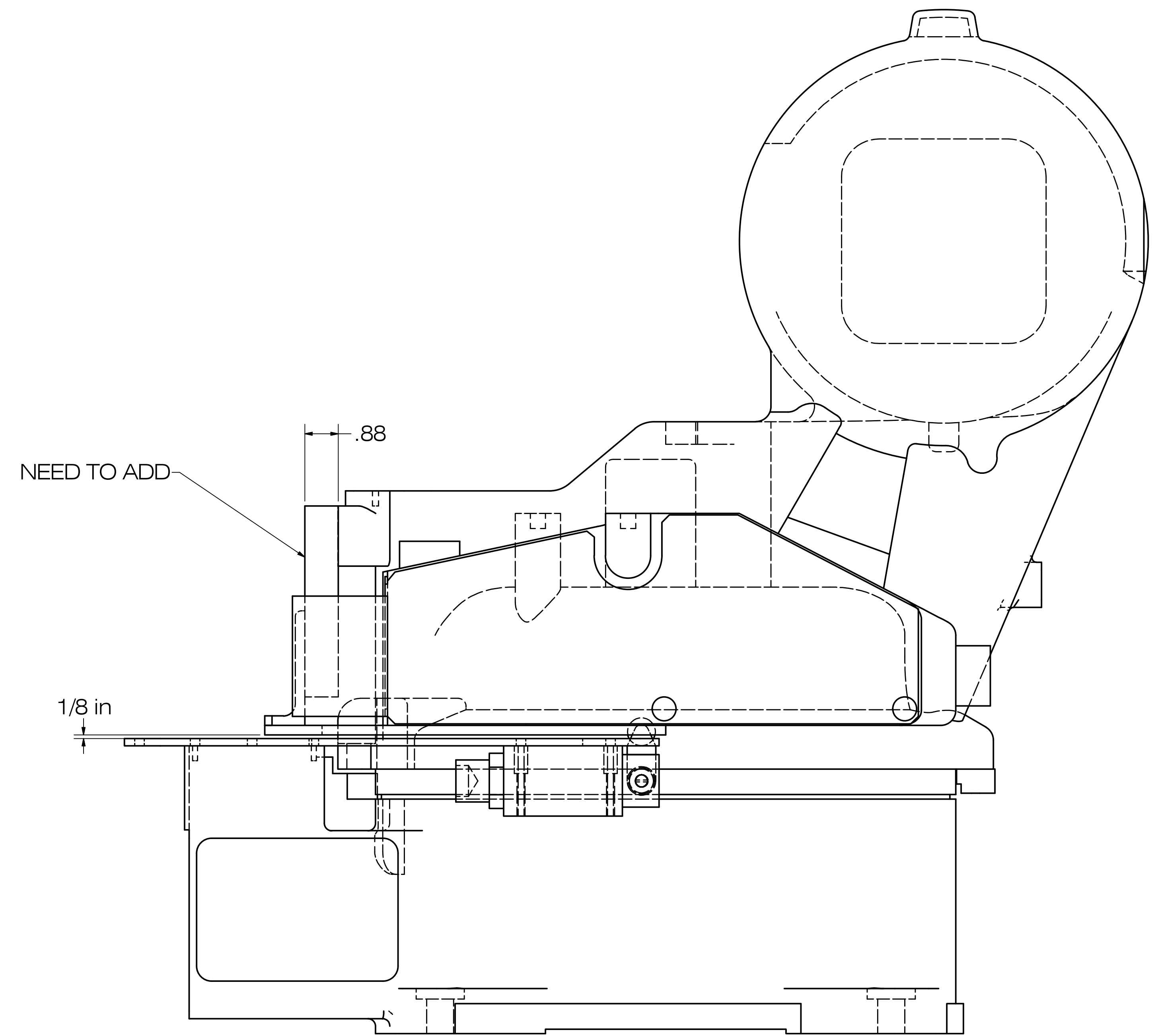
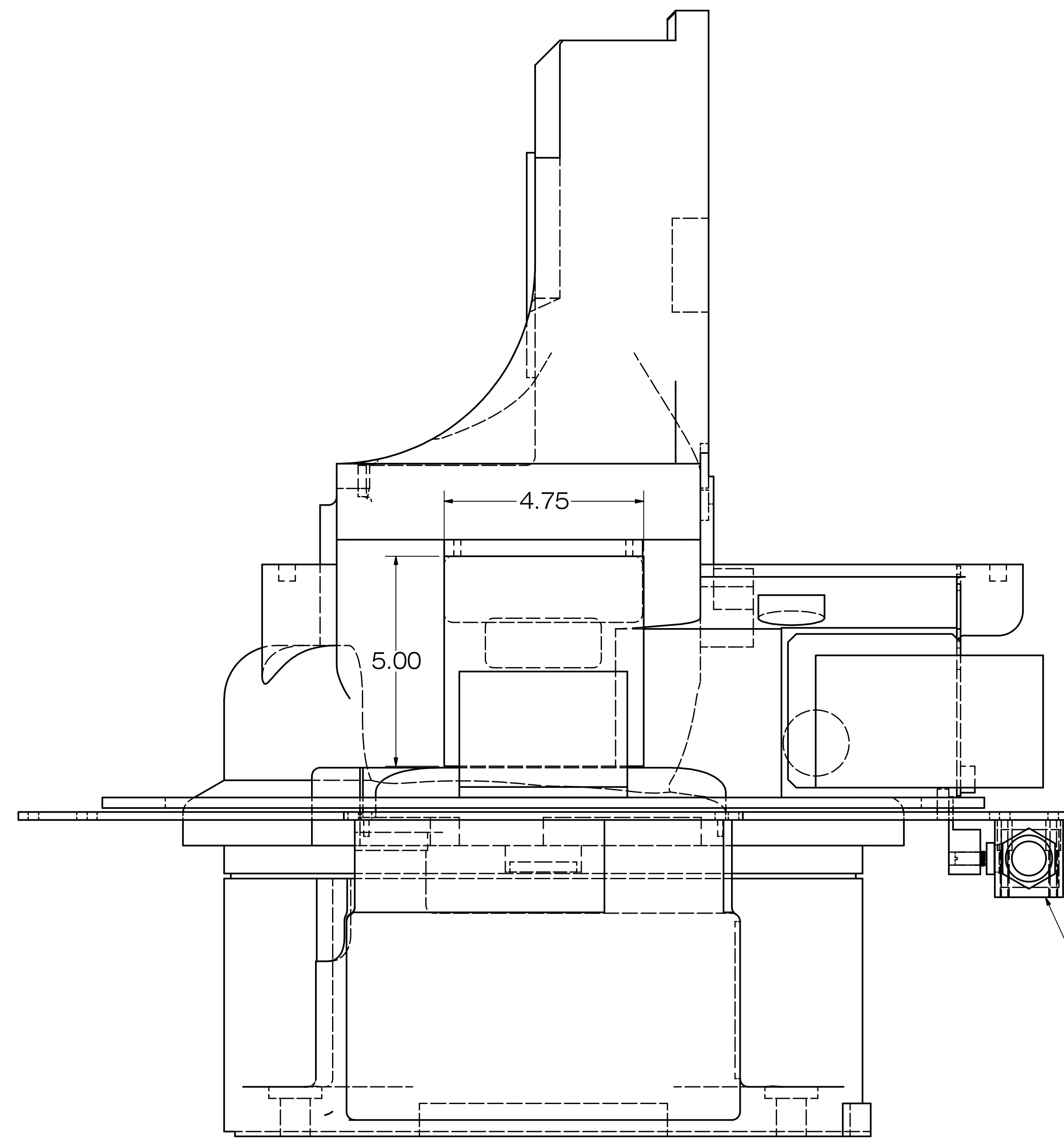
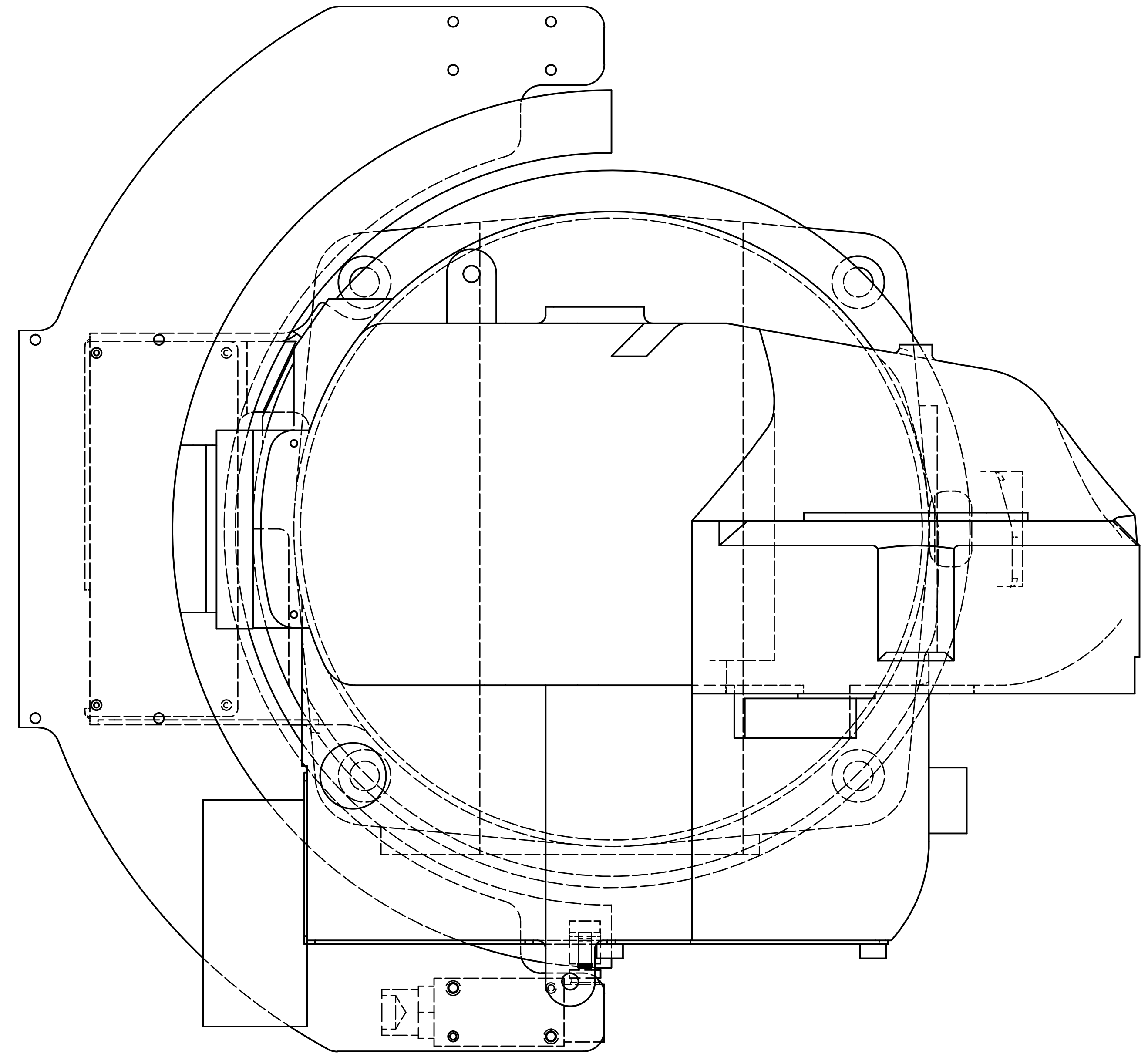
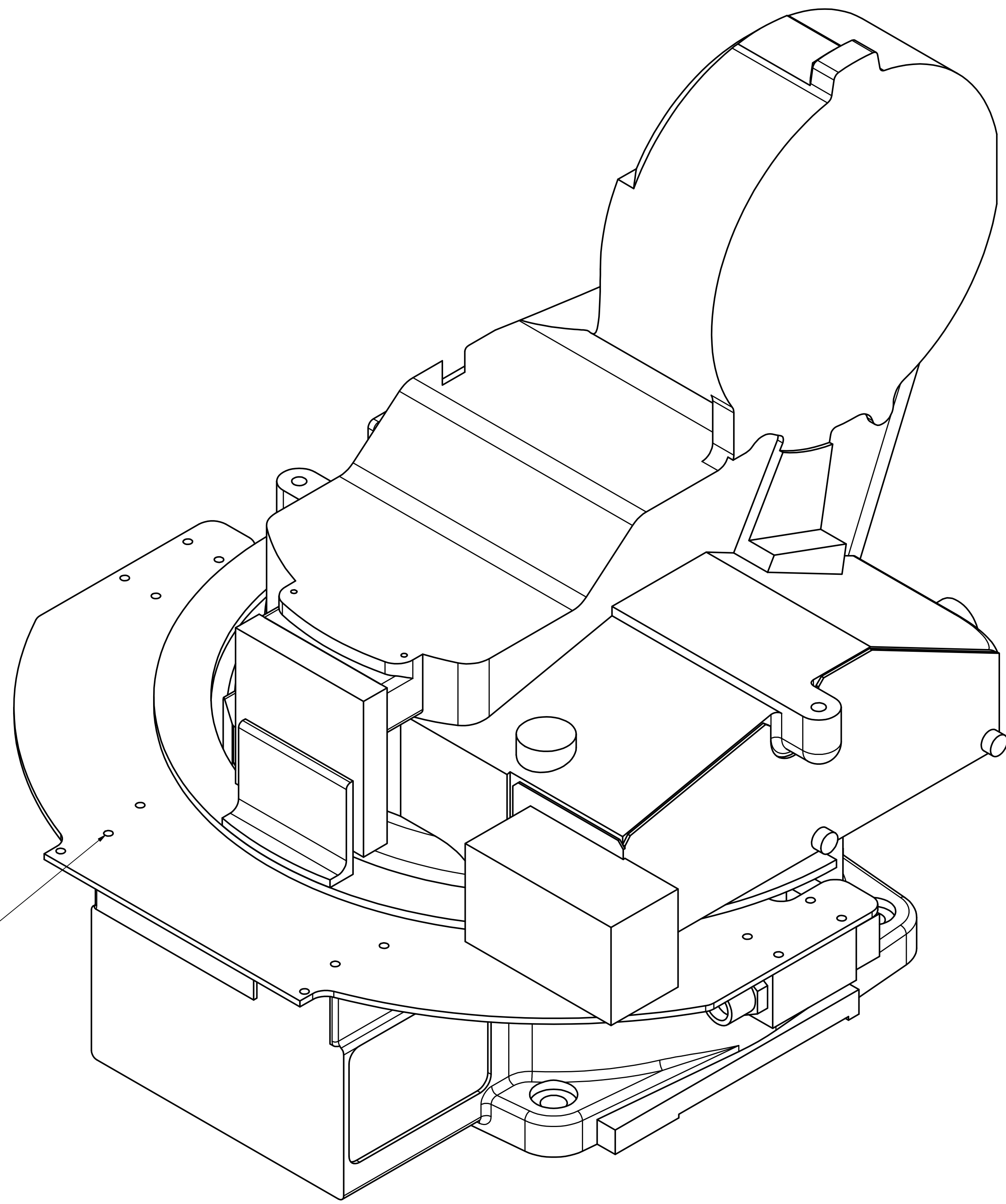




1. Measure existing tap holes on robot.
2. Drill two clearance holes
3. Mount zone ring with correct fasteners.
4. Mount switch plate to existing holes, use correct fasteners.
5. Adjust switch arm.





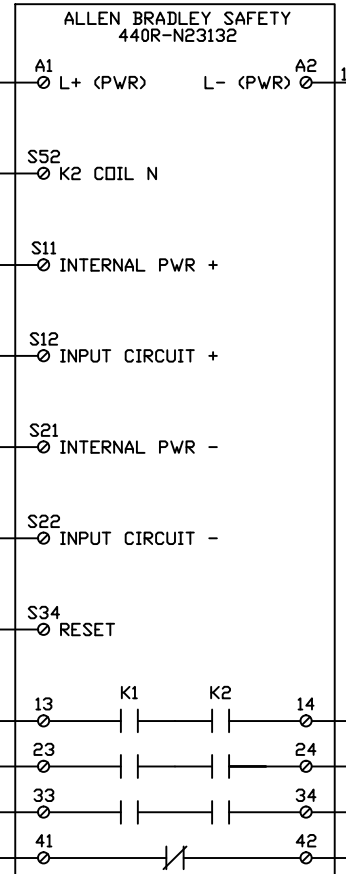
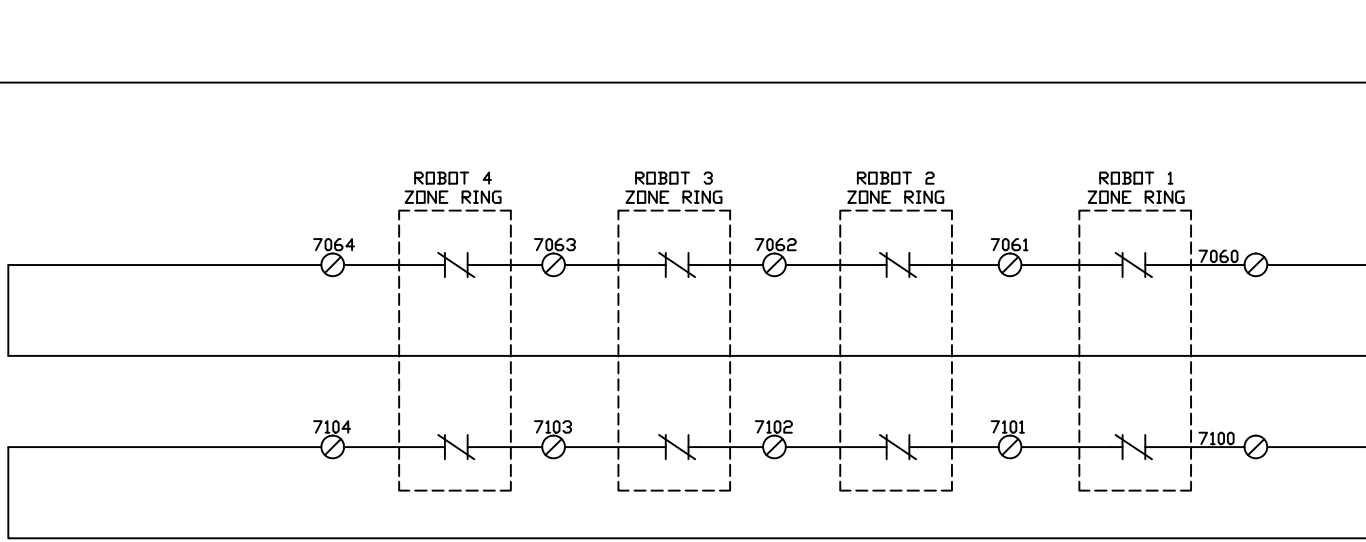
 3RD ANGLE PROJECTION	G&R MACHINE TOOL, INC.	
	TITLE:	
TOLERANCES UNLESS OTHERWISE SPECIFIED: 2 PLACE DECIMALS ± .010 3 PLACE DECIMALS ± .005 4 PLACE DECIMALS ± .002 ALL MACHINED ANGLES: 45°-15' REMOVE ALL BURRS AND SHARP CORNERS CHAMFER ALL MALE THREADS AND TAPERED HOLES DO NOT USE SEE DIMENSIONS FOR MANUFACTURING DON'T SCALE DRAWING	USED ON:	DATE:
DESIGN: GRMDESIGN	SCALE:	DRAWING NUMBER:
SHEET: 1 OF 1	FORMAT:	ENB4L

G&R Machine Tool, Inc.
 5988 East Executive Drive
 Westland MI, 48185
 (734) 641-6560

PROPRIETARY INFORMATION
 This drawing contains G&R Machine Tool, Inc. proprietary information and shall not be duplicated, disclosed to others, or used for purposes other than to carry out the intent for which the material is delivered unless written consent is first obtained from G&R Machine Tool, Inc.

07
00
07
01
07
02
07
03
07
04
07
05
07
06
07
07
07
08
07
09
07
10
07
11
07
12
07
13
07
14
07
15
07
16
07
17
07
18
07
19
07
20

06
38
1611



06
38
1592

